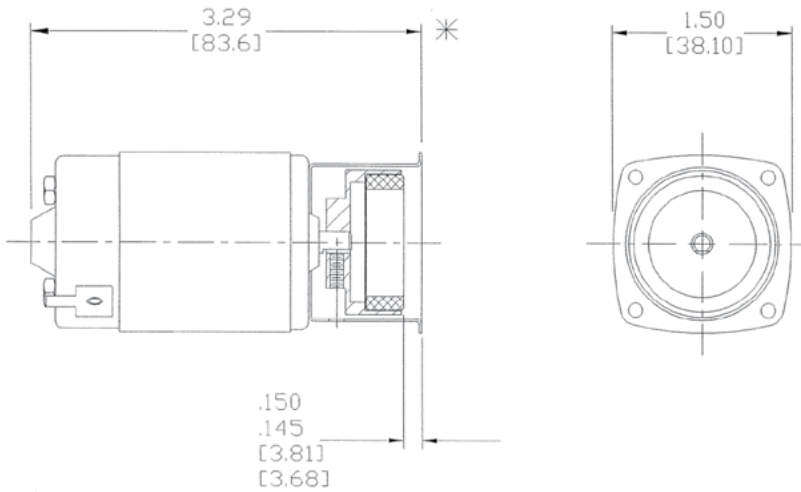
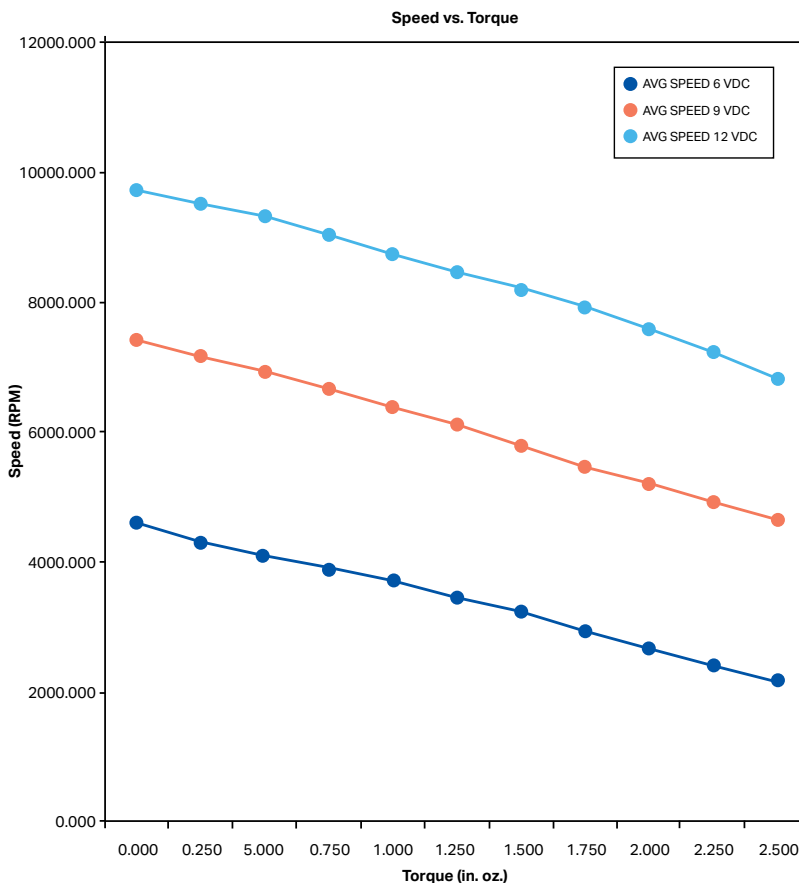


MODEL DC-331.C DRIVE



AVERAGE TESTED PERFORMANCE



MOTOR SPECIFICATIONS

TYPE

- Permanent Magnet

VOLTAGE

- 12 VDC

AMPERAGE

- .38 AMPS Maximum at no load; 10.5 AMPS Maximum at stall.

NO LOAD SPEED

- 7350 RPM Minimum

TORQUE

- 13.5 OZ. IN. Minimum at stall.

BEARING SLEEVE, ENDPLAY

- .015 MAX.

- Shaft rotation is CW Looking at Mounting with (+) on #1 Terminal.

- Male Spade Terminals, Tin plated for Soldering.

WIRING CONNECTIONS

12 VDC	
<p>(+) MOTOR (-)</p> <p>C.W.S.E.</p> <p>(SHAFT END SHOWN)</p>	<p>Motor is labeled with (+) for positive</p> <p>TERMINALS</p> <ul style="list-style-type: none"> .188 Male Spade

MICROPUMP