



# GB SERIES SUCTION SHOE TECHNOLOGY

When you need a low-flow pump that delivers high performance in a small package, the GB Series is an excellent solution.

The GB Series is part of the patented suction shoe gear pump design offered exclusively by Micropump. The suction shoe technology offers best in class performance with industry-leading volumetric efficiency for fluid movement.

## MAGNETIC DRIVE GEAR PUMP

### RELIABILITY

GB Series pumps self-compensate for wear, ensuring near zero slip and a longer pump life. The suction shoe technology delivers even longer reliability with higher differential pressures when compared to cavity style designs.

### WIDE TEMPERATURE RANGE

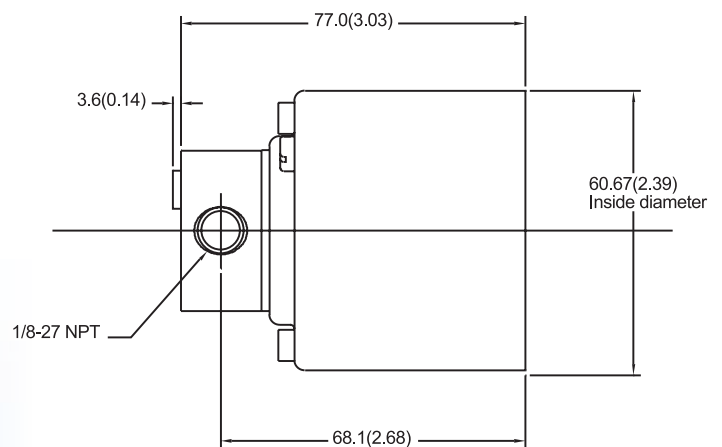
Micropump's GB Series features the same hydraulic performance from the lowest temperature, even freezing, to the highest temperature allowed by the component materials.

### WIDE RANGE OF CONFIGURATIONS

GB Series can be customized to meet your applications including the optional internal bypass.



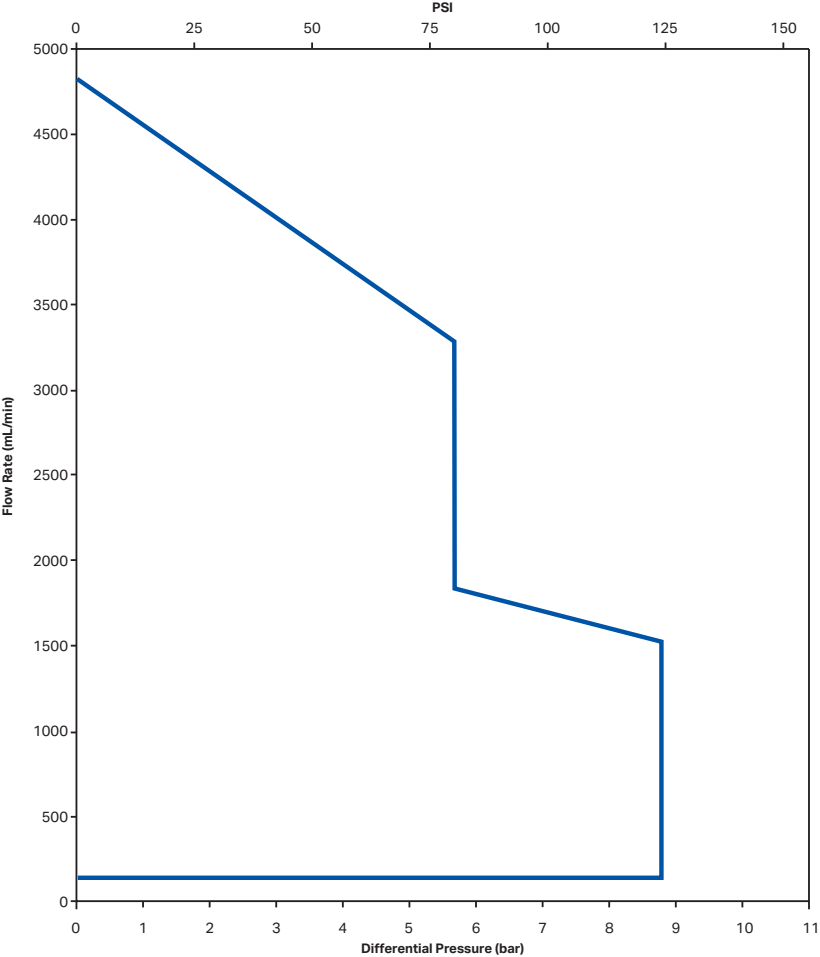
A MOUNT



Units: mm(in). Nominal dimensions shown.

# PUMP FLOW RANGE

(Based on Constant Speed Curves at 4,000 RPM)



# MAGNETIC GEAR PUMP FEATURES

## SUCTION SHOE STYLE PUMPS

The suction shoe allows for consistent performance across a wide operating temperature range. The suction shoe pump, unlike any other gear pump on the market, self adjusts on the job for reliable, pulseless flow, and features easier maintenance with less downtime than standard pumps.

## SMOOTH PULSELESS DELIVERY

Positive displacement, precision gears provide consistent fluid delivery in continuous processes.

## EASY TO SERVICE

Our pumps are easy to service using a Micropump® service kit and simple hand tools.

## FLUID PATH INTEGRITY

The magnetic drive and static o-ring seal(s) keep the fluid securely inside the pump and potential contaminants out.

## CHEMICALLY RESISTANT

Chemically inert materials for harsh environments.

## PERFORMANCE SUMMARY

### FLOW RATE AT 5500 RPM

- 6.4 L/min (1.70 US gpm)

### DISPLACEMENT

Gear Set	P23	P25	P35
mL/rev	0.26	0.58	1.17
US gal/1000 rev	0.07	0.15	0.31

### MAXIMUM RATED DIFFERENTIAL PRESSURE

- 8.6 Bar (125 psi)

### MAXIMUM RATED SYSTEM PRESSURE

- 21 Bar (300 psi)

### TEMPERATURE RANGE

- 46 to 177 °C (-50 to 351 °F)

### VISCOSITY RANGE

- 0.5 to 1500 cps

### MAXIMUM SPEED

- 5500 rpm

## PUMP CONSTRUCTION

- Suction shoe style
- Two or three helical gears
- Stationary shafts
- O-ring seal

## WETTED MATERIALS

### BASE MATERIAL

- 316 stainless steel
- Titanium\*
- Alloy 20\*
- Hastalloy C-276\*

### GEARS

- PEEK
- PPS

### STATIC SEALS

- Viton
- TEV
- EP
- Kalrez

## MAGNETS

### DRIVEN AND DRIVING

- Ferrite
- Rare earth\*

## PRODUCT ENHANCEMENTS

- Internal Bypass\*
- 1/4 - 18 NPT Side Ports\*

\*Denotes customization or materials that may require minimum order quantities.