



CA SERIES EAGLEDRIVE™

For high-flow applications requiring design simplicity, trust the reliable Micropump® CA Series Magnetic Drive Centrifugal Pump.

The CA Series magnetic drive removes the need for direct drive connection to the pump impeller, eliminating leak points associated with shaft seals, while providing energy-efficient fluid delivery. Stainless steel construction provides superior chemical and abrasion resistance.

MAGNETIC DRIVE CENTRIFUGAL PUMP

SEVERE DUTY

The abrasive performance of the CA Series is what makes the Micropump centrifugal pump unique. The stainless steel impeller and design of the thrust plate allows for abrasive particles to flow through the pump without significant wear or degradation of performance.

SMALL SIZE

The miniature package size of the Series CA is easily incorporated into the design of many systems.

SIMPLE CONSTRUCTION

For long life and easy service, Series CA uses a minimal number of moving parts. Its impeller/magnet assembly integrates rotating parts into one element, which reduces alignment problems, failures, and wear rates.

ELECTROMAGNETIC DRIVE FEATURES

EASY DESIGN INTEGRATION

Supports wide range of power supply voltages (10-38V).
Error signals for easy error detection and diagnosis.

HIGH PERFORMANCE

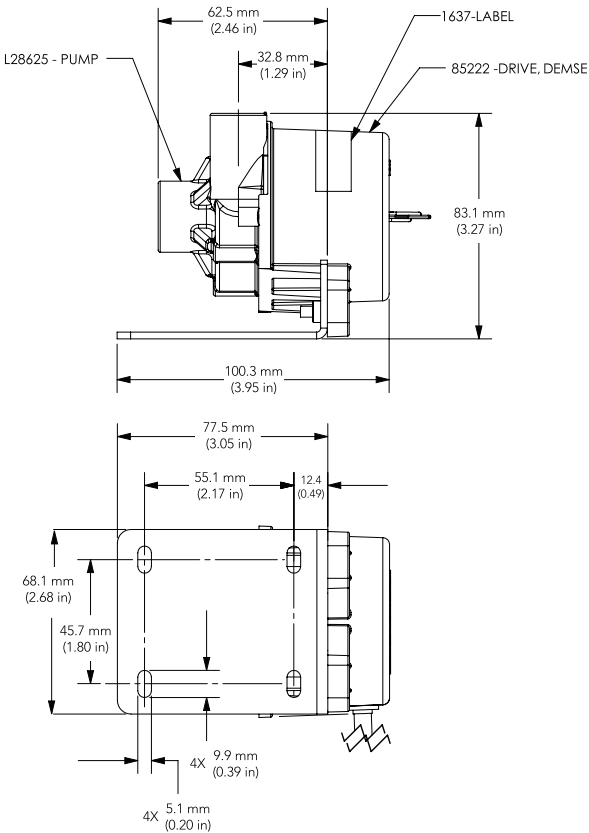
Electromagnetic drive, with low inertia and high torque, for fast response times
Automotive grade electrical components for high temperature operation (up to 120°C) and durability.

LONG LIFE

Electromagnetic drive means fewer moving parts.

CA SERIES EAGLEDRIVE™

CA-S-DEMSE

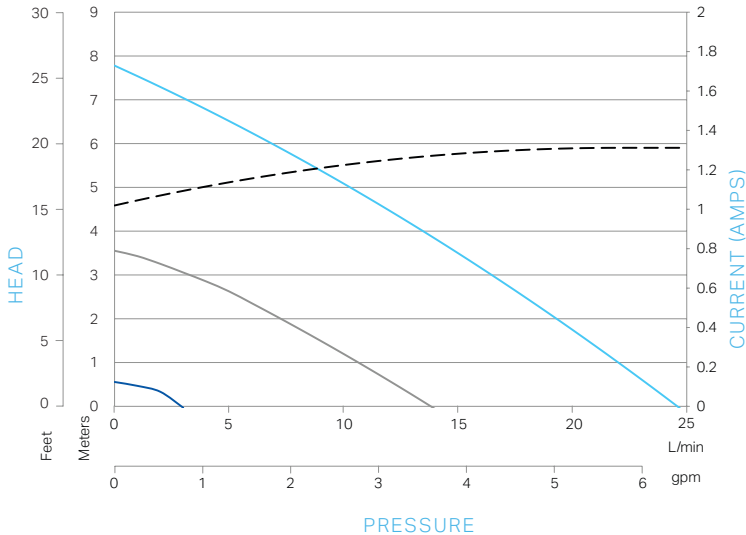


PERFORMANCE

Power Supply Voltage = 36 VDC
Water @ 1cps

Speed control = 5V
Speed control = 3V
Speed control = 1V
Power Supply Current

CA-S-DEMSE Performance



BEST OPERATING POINT: 22L/min (@ 1.4 psi, 5V)

DRIVE SPECIFICATIONS FOR EAGLEDRIVE™ DEMSE

SPEED

- 1000 to 8000 rpm (36V)
- 500 to 5500 rpm (24V)
- 250 to 2750 rpm (12V)

SPEED (AT RATED TORQUE)

- 3750 rpm @ 10 oz-in (24V)

CURRENT (AT RATED TORQUE)

- 2A @ 10 oz-in (24V)

POWER SUPPLY

- 10V to 38V DC

TEMPERATURE RANGE

- 40 to 120 °C (-40 to 248 °F)

ACTUAL PERFORMANCE MAY VARY. Specifications are subject to change without notice.

PERFORMANCE SUMMARY

MAXIMUM HEAD AT 6000 RPM

- 5.95 meters (19.5 ft)

MAXIMUM RATED SYSTEM PRESSURE

- 13.8 Bar (200 psi)

TEMPERATURE RANGE

- -46 to 121 °C (-50 to 250 °F)

VISCOSITY RANGE

- Up to 100 cps

NPSHR

- 5.8 ft

PUMP CONSTRUCTION

- Magnetic drive centrifugal pump

WETTED MATERIALS

IMPELLER ASSEMBLY

- 316 stainless steel impeller
- PTFE bushings
- 316 stainless steel/PTFE driven magnet

PUMP HOUSING

- 316 stainless steel

STATIC SEALS

- PTFE

THRUST PLATE

- PTFE

DRIVING MAGNET

- Ferrite magnet encapsulated in PTFE/316 stainless steel

DRIVE OPTIONS

- AC
- DC
- Air Motor
- Electromagnetic