



GJ SERIES EAGLEDRIVE™

The GJ Series pumps are the smallest, most compact size and offers the lowest displacement of our cavity style family of pumps.

These magnetically driven gear pumps have provided solutions for customers applications for more than 60 years. Our cavity style gear pumps feature no dynamic seals for applications that cannot tolerate leaks.

MAGNETIC DRIVE PUMP

SMALL SIZE

The miniature package size of the GJ Series is easily incorporated into the design of many systems.

DISPLACEMENT OPTIONS

The GJ Series offers the most gear set options, so you can choose the displacement necessary for your application.

REVERSE PUMPING CAPABILITY

Micro pump cavity style gear pumps can be designed for applications with the need for intermittent reverse pumping.

LEAK FREE

Micro pump's design utilizes static seals for leak free, contamination free operation.

ELECTROMAGNETIC DRIVE FEATURES

EASY DESIGN INTEGRATION

Supports wide range of power supply voltages (10-38V).
Error signals for easy error detection and diagnosis.

HIGH PERFORMANCE

Electromagnetic drive, with low inertia and high torque, for fast response times
Automotive grade electrical components for high temperature operation (up to 120°C) and durability.

LONG LIFE

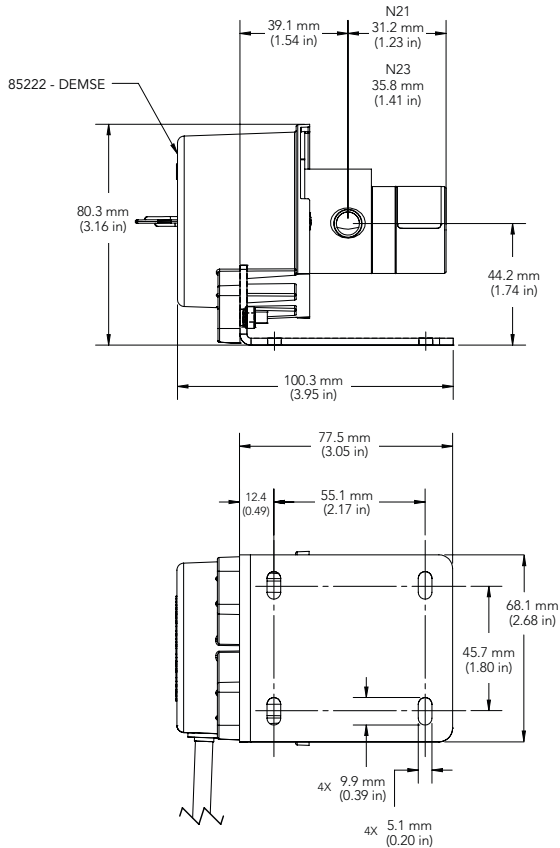
Electromagnetic drive means fewer moving parts.

GJ SERIES EAGLEDRIVE™

N21 & N23 DEMSE



GJR-N21 DEMSE



DEMSE DRIVE SPECIFICATIONS

SPEED

- 1000 to 8000 (36V)
- 500 to 5500 (24V)
- 250 to 2650 (12V)

SPEED (AT RATED TORQUE)

- 3750 rpm @10 oz-in (24V)

CURRENT (AT RATED TORQUE)

- 2A @10 oz-in (24V)

POWER SUPPLY

- 10V to 38V DC

TEMPERATURE RANGE

- 40 to 120 °C | -40 to 248 °F

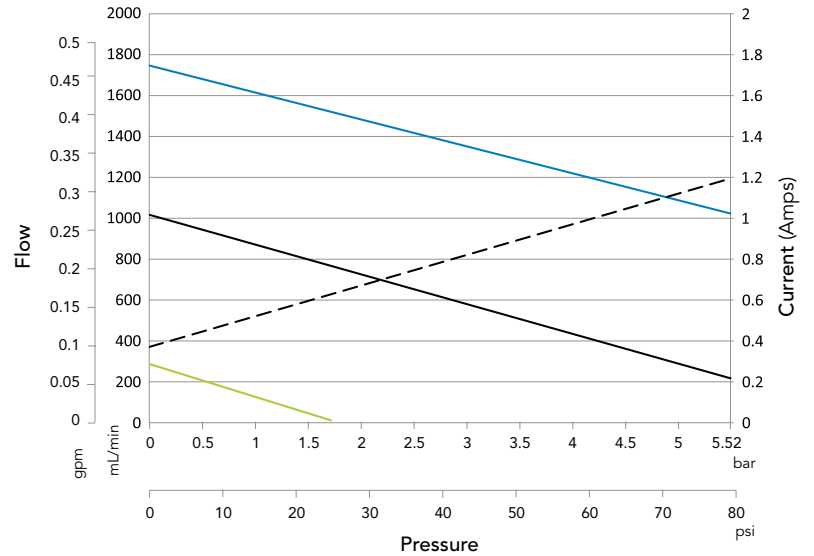
PERFORMANCE

Power Supply Voltage = 24 VDC

Water @ 1cps

- Speed control = 5V
- Speed control = 3V
- Speed control = 1V
- Power Supply Current

GJ-N21-DEMSE Performance

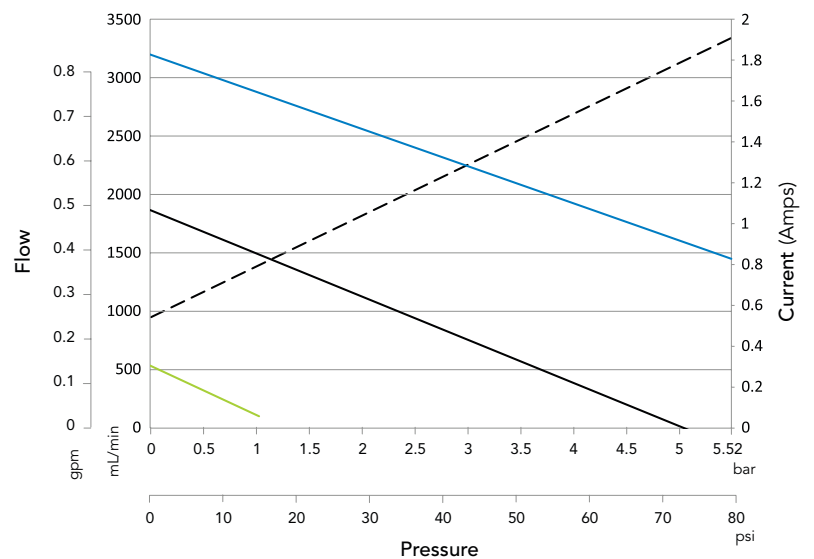


FLOW RATE NOMINAL: 600 mL/min (@ 2.8 Bar, 3V)

FLOW RATE MAX: 1760 mL/min (@ 0 Bar, 5V)

DISPLACEMENT: 0.32 mL/rev

GJ-N23-DEMSE Performance



FLOW RATE NOMINAL: 900 mL/min (@ 2.8 Bar, 3V)

FLOW RATE MAX: 3520 mL/min (@ 0 Bar, 5V)

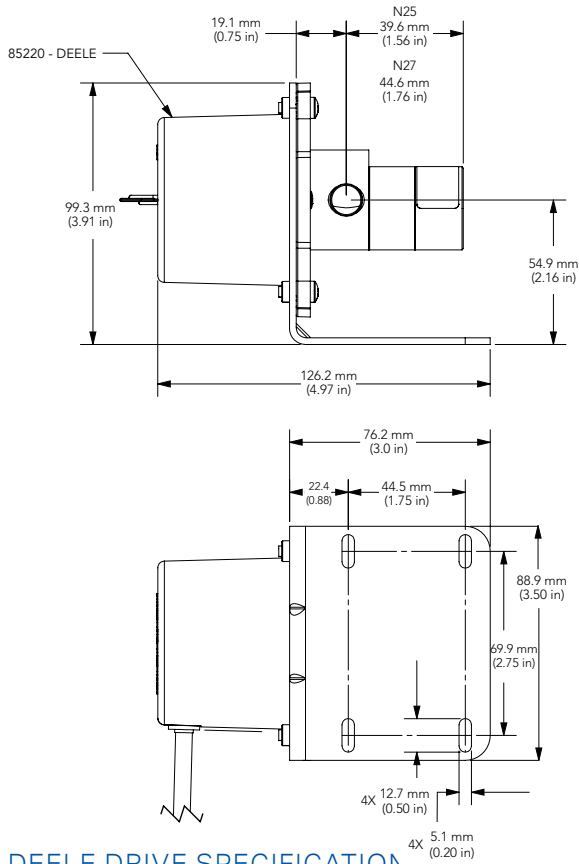
DISPLACEMENT: 0.64 mL/rev

GJ SERIES EAGLEDRIVE™

N25 & N27 DEELE



GJR-N27 DEELE



DEELE DRIVE SPECIFICATIONS

SPEED

- 1000 to 8000 (36V)
- 500 to 5500 (24V)
- 250 to 2650 (12V)

SPEED (AT RATED TORQUE)

- 3750 rpm @20 oz-in (24V)

CURRENT (AT RATED TORQUE)

- 2.9A @20 oz-in (24V)

POWER SUPPLY

- 10V to 38V DC

TEMPERATURE RANGE

- 40 to 120 °C | -40 to 248 °F

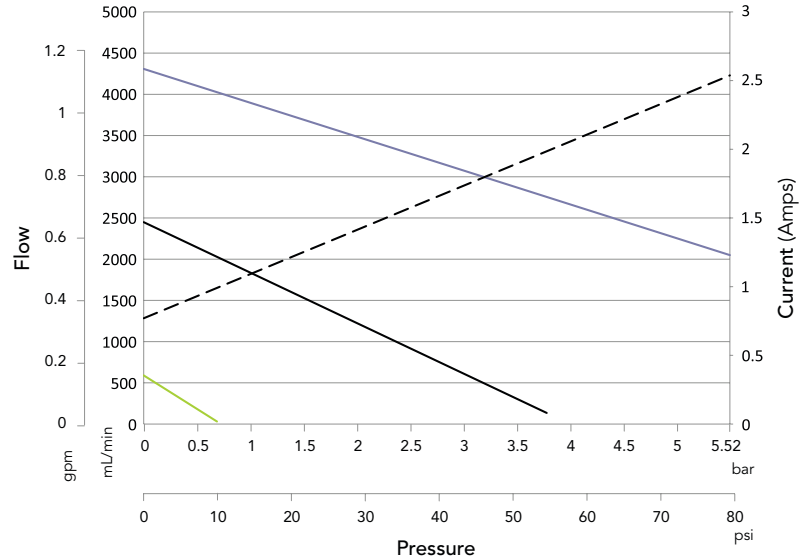
PERFORMANCE

Power Supply Voltage = 24 VDC

Water @ 1cps

- Speed control = 5V
- Speed control = 3V
- Speed control = 1V
- Power Supply Current

GJ-N25-DEELE Performance

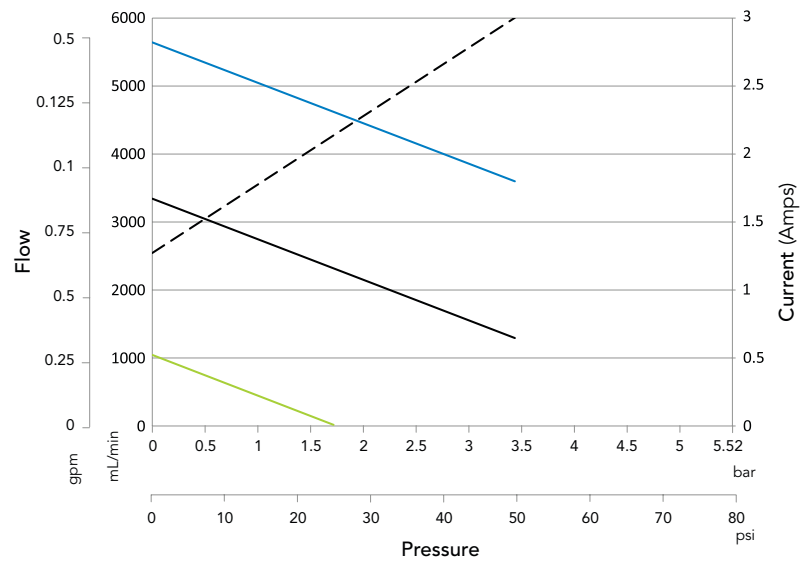


FLOW RATE NOMINAL: 1000mL/min (@ 2.8 Bar, 3V)

FLOW RATE MAX: 5005 mL/min (@ 0 Bar, 5V)

DISPLACEMENT: 0.91 mL/rev

GJ-N27-DEELE Performance



FLOW RATE NOMINAL: 2700 mL/min (@ 1.7 Bar, 3V)

FLOW RATE MAX: 6765 mL/min (@ 0 Bar, 5V)

DISPLACEMENT: 1.23 mL/rev

GJ SERIES PERFORMANCE SUMMARY

PUMP PERFORMANCE

DISPLACEMENT				
■ Gear Set	N21	N23	N25	N27
■ mL/rev	0.316	0.64	0.91	1.23
■ US gal/1000 rev	0.08	0.17	0.24	0.32

MAXIMUM RATED DIFFERENTIAL PRESSURE	
■ 5.6 Bar 80 psi	

MAXIMUM RATED SYSTEM PRESSURE	
■ 21 Bar 300 psi	

FLOW RATE AT 4000 RPM	
■ 4.92 L/min (1.30 US gpm)	

VISCOSITY RANGE	
■ 0.5 to 1500 cps	

MAXIMUM SPEED	
■ 5500 rpm	

PUMP CONSTRUCTION

- Cavity style
- Side Port
- Two helical, shafted gears
- Sleeve bushings
- PTFE bevel or o-ring seal

WETTED MATERIALS

BASE MATERIAL	
■ 316 stainless steel	■ Titanium*
■ Alloy 20*	■ Hastalloy C-276*

GEARS	
■ PTFE	■ PEEK*
■ PPS*	

STATIC SEALS	
■ PTFE	■ PTFE / Viton*
■ Viton*	■ PTFE / EP*

MAGNETS

DRIVEN	
■ Ferrite	
■ Rare earth*	

DRIVING	
■ Electromagnetic	

**Denotes customization or materials that may require minimum order quantities.*

ACTUAL PERFORMANCE MAY VARY. Specifications are subject to change without notice.